

## 名博 · 進程

憑藉十幾年對於技術和經驗的積累，名博公司研發了新型的現代化的生產包裝設備，這將使客戶能得到最可靠的技術支持。

作為完善的外包裝設備供應商，名博根據客戶要求，提供完美的解決方案，確保客戶生產高品質的產品，從而使經濟效益最大化。

穩定、高效、可靠的現代化包裝生產線，能為您減少勞動力支出，節約生產成本。





## MINGBO PROGRESS

MINGBO innovated advancing production and packaging machine, based on technology and experience which has accumulated in the last 10 years. These machines can supply much more reliable technical support to clients.

As a perfect outer packaging machine supplier, Mingbo can give perfect packaging solution according to clients' request. assure high quality products, and bring the biggest economy benefit.

Stable, highly-efficient, reliable and modern packaging line, cut down the human expense and save the production cost for our clients.



**名博機械**  
MINGBO MACHINERY







名博機械  
MINGBO MACHINERY



## 公司簡介

### COMPANY PROFILE

臺灣名博機械有限公司是一家集科研、生產製造、銷售、服務於一體的专业食品包裝設備製造企業，公司坐落於高雄市，交通便捷，公司自成立以來，一直堅持“以技術創新為動力、產品品質為根本、使用者滿意為宗旨”的指導思想，目前公司已經成功開發出多種高速度、高性能的醬醃菜包裝機系列設備，公司擁有多項自主智慧財產權發明專利。

本公司主要生產全自動轉盤式包裝機與全自動真空包裝機生產聯動線，所有產品均嚴格按照國家“GMP”標準製造。先進的生產理念、完備的生產體系、嚴謹周到的售後服務成就了名博機械在包裝機械行業的領先地位，其醬醃菜包裝技術更是馳名於國內外，受到國內外廣大客戶的肯定。

臺灣名博機械以誠實、守信和穩健立足于市場，樹立自身品牌形象，公司以滿足客戶多樣化包裝需求為市場導向，依託先進的設計理念和豐富的包裝經驗，致力於成為全球性的包裝系統供應商，為客戶創造價值。



Taiwan MINGBO Machinery Co., Ltd. is a research, manufacturing, sales and service in one of the professional food packaging equipment manufacturer, the company is located in Kaohsiung City, Taiwan with the convenient transportation.

Since its inception, we have always insisted the "technological innovation as the driving force, product quality as a fundamental, customer satisfaction for the purpose," the guiding ideology, the company has successfully developed a variety of high-speed, high-performance packaging machine equipment, The company has a number of independent intellectual property patents.

The company mainly produces automatic rotary packaging machines and automatic vacuum packaging machine production line linkage, all products are in strict accordance with the national "GMP" standards. Advanced production concepts, complete production system, rigorous and thoughtful service achieve MINGBO machine with the leading position in the packaging machinery industry, its pickles packaging technology is well-known at home and abroad, by domestic and international customer recognition.

Taiwan MINGBO machinery is honest, trustworthy and stable in the market, and establishes its own brand image, the company diversified to meet customer demand for packaging market-oriented, relying on advanced design concepts and rich experience in the packaging, to become a global packaging systems supplier, creating value for customers.

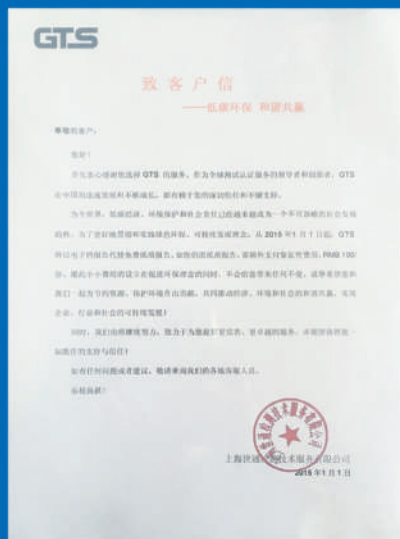


# Certificates

## 企業資質

榮譽源於用心，每份認可的資質證書凝聚名博人奮力拼搏的結晶，每份榮譽不但是我們的名金片和通行證，而且是我們一個個路標，那是我們一次次的歷程。

Honor results from diligence. Each approbatory professional certificate is the fruit of diligence and perseverance for Mingbo people. Praise and honor is not only our business card and pass card but also our route sign and experience.







**名博機械**  
MINGBO MACHINERY

## CUSTOMERS

### 部分用戶

堅持以人為本，堅持超前、理性、實用、耐用的原則，公司擁有一批高、精、尖水準的機械加工設備以及高素質的工裝設計隊伍和高水準的研發團隊；奠定了最具有競爭力的製造基礎和保障。

We always persist in the principle of people oriented, advance, reason, utility and serviceability. We own a batch of high-grade, high precision, advanced technology devices and high quality design team, high level team, which establish a foundation of the most competitive manufacturing.



注：此排名不分先後！



# 自動真空包裝機

## MB8ZK10-150/200

### Automatic Vacuum Packing Machine



#### 主要性能和特點

##### Main performance and features

- 1、自動真空包裝機由兩種分離的旋轉式機體組成（分別為充填系統和真空系統）；
- 2、操作方便：採用PLC觸控式螢幕控制，人機界面操作系統，操作直觀方便；
- 3、調節方便：真正實現全自動化。只需從人機界面輸入所需參數，包裝機各部位即可調節到所需指令的部分；
- 4、自動化程度高：達到全自動真空要求，在稱重、包裝過程中實現無人化。出現故障自動報警；
- 5、完善的預防系統，可智慧檢測是否開袋及開袋是否完整，在不合適加料的情況下不加料不熱封。不浪費袋子及物料，節約成本；
- 6、設備符合食品加工機械的衛生標準，設備與物料接觸部分採用304不鏽鋼或其他符合食品衛生要求的材料加工，保證食品的衛生和安全，符合GMP標準；
- 7、使用預製包裝袋，封口品質高，提高成品檔次；
- 8、適用包裝物料範圍：可選配多種計量稱，對小魚仔、醬醃菜、堅果炒貨、麻辣膨化、液體等物料進行包裝。

1. Automatic vacuum packaging machine separated by two rotary body composition (filling and vacuum systems).
2. Easy to operate: PLC touch screen control, man-machine interface operating system, intuitive and easy to operate.
3. Easy to adjust: real fully automated. Just part of the required input parameters from the man-machine interface, all parts of the packaging machine can be adjusted to the desired command.
4. The high degree of automation: up automatic vacuum requirements, weighing and packaging process to achieve unmanned. If there is fault alarm occurs.
5. Perfect prevention systems, may only detect whether it opens the bag, and opening bags is complete, in the case of inappropriate feeding does not feed heat sealing. No wasting bags and material, it costs savings.
6. The device complies with hygienic standards of food processing machinery, equipment and material contact parts made of 304 stainless steel or other materials with food hygienic requirements processing, and ensure food hygiene and safety, in line with GMP standards.
7. The use of prefabricated bags, high sealing quality, improve product quality.
8. Suitable packaging materials range: Matching multiple metering which packs fish aberdeen, pickles, roasted nuts, spicy puffed, liquids and other materials.

#### 工作流程

##### Work process

1. 上袋、2. 開袋、3. 下料、4. 加液、5. 預留、6. 預留、7. 渡袋、8. 預留→（真空）、
1. 接袋、2. 合蓋、3. 一次真空、4. 二次真空、5. 三次真空、6. 四次真空、7. 封口、8. 封口冷卻、
9. 放氣、10. 開蓋出袋。
1. feed bags, 2. open bags, 3. fall material, 4. add liquid, 5. reserve, 6. reserve, 7. pass bags, 8. reserve (vacuum),
1. receive bags, 2. close the lid, 3. vacuum one time, 4. vacuum twice, 5. vacuum three times, 6. vacuum four times, 7. seal, 8. seal&cool, 9. deflate, 10. open the lid and output.





## 主要技術參數 Main technical parameter

型 號 Model	MB8ZK10-150	MB8ZK10-200
包裝袋規格 Bags Specifications	W:70-150mm L:80-230mm	W:80-200mm L:80-300mm
袋子類型 Bag Type	自立袋、手提袋、拉鍊袋、四邊封袋、三邊封袋、紙袋、複合袋等 Stand-up pouches, handbags, zipper bags, 4-side sealing bags, 3-side sealing bags, paper bags, compound bags, etc.	
充填範圍 Filling range	20-1000g	
包裝速度 Packing speed	35-55包/分bags/min	35-45包/分bags/min
主機重量 Weight	2400kg	
主機功率 Host power	4KW(不含真空泵not including vacuum)	
驅動電源 Drive power	三相五線 380V 50HZ 3-phase 5-wire system 380V 50HZ	
外形尺寸 Dimensions	2700X2200X1600mm(不含提升机without elevator)	
耗 氣 量 Air consumption	≥0.4m³/min(壓縮空氣由用戶自行提供compressed air provided by the user)	
冷卻用水 Cooling Water	冷卻水Cooling water: 15°C-20°C、3升/分鐘 3liters/min (建議配冷卻機recommended with cooler)	

▲ 機器可能在未事先通知的情況下對技術進行改進，照片僅供參考，以實物為準。  
Words and photographs on this catalogues are to help understanding of the machine model only and subject to technical modification without prior notice. The final specification is as per our quotation offered to youself exclusively.





# 自動真空包裝機

## MB8ZK10-130

### Automatic Vacuum Packing Machine



#### 主要性能和特點

##### Main performance and features

- 1、自動真空包裝機由兩種分離的旋轉式機體組成（分別為充填系統和真空系統）；
- 2、操作方便：採用PLC觸控式螢幕控制，人機界面操作系統，操作直觀方便；
- 3、調節方便：真正實現全自動化。只需從人機界面輸入所需參數，包裝機各部位即可調節到所需指令的部分；
- 4、自動化程度高：達到全自動真空要求，在稱重、包裝過程中實現無人化。出現故障自動報警；
- 5、完善的預防系統，可智慧檢測是否開袋及開袋是否完整，在不合適加料的情況下不加料不熱封。不浪費袋子及物料，節約成本；
- 6、設備符合食品加工機械的衛生標準，設備與物料接觸部分採用304不鏽鋼或其他符合食品衛生要求的材料加工，保證食品的衛生和安全，符合GMP標準；
- 7、使用預製包裝袋，封口品質高，提高成品檔次；
- 8、適用包裝物料範圍：可選配多種計量稱，對小魚仔、醬醃菜、堅果炒貨、麻辣膨化、液體等物料進行包裝。

1. Automatic vacuum packaging machine separated by two rotary body composition (filling and vacuum systems).
2. Easy to operate: PLC touch screen control, man-machine interface operating system, intuitive and easy to operate.
3. Easy to adjust: real fully automated. Just part of the required input parameters from the man-machine interface, all parts of the packaging machine can be adjusted to the desired command.
4. The high degree of automation: up automatic vacuum requirements, weighing and packaging process to achieve unmanned. If there is fault alarm occurs.
5. Perfect prevention systems, may only detect whether it opens the bag, and opening bags is complete, in the case of inappropriate feeding does not feed heat sealing. No wasting bags and material, it costs savings.
6. The device complies with hygienic standards of food processing machinery, equipment and material contact parts made of 304 stainless steel or other materials with food hygienic requirements processing, and ensure food hygiene and safety, in line with GMP standards.
7. The use of prefabricated bags, high sealing quality, improve product quality.
8. Suitable packaging materials range: Matching multiple metering which packs fish aberdeen, pickles, roasted nuts, spicy puffed, liquids and other materials.

#### 工作流程

##### Work process

1. 上袋、2. 開袋、3. 下料、4. 加液、5. 預留、6. 預留、7. 渡袋、8. 預留→（真空）、
1. 接袋、2. 合蓋、3. 一次真空、4. 二次真空、5. 三次真空、6. 四次真空、7. 封口、8. 封口冷卻、
9. 放氣、10. 開蓋出袋。
1. feed bags, 2. open bags, 3. fall material, 4. add liquid, 5. reserve, 6.reserve, 7. pass bags, 8. reserve (vacuum),
1. receive bags, 2. close the lid, 3. vacuum one time, 4. vacuum twice, 5. vacuum three times, 6. vacuum four times, 7. seal, 8. seal&cool, 9. deflate, 10. open the lid and output.



## 主要技術參數 Main technical parameter

包裝袋規格 Bags Specifications	W:70-130mm L:80-210mm
袋子類型 Bag Type	自立袋、手提袋、拉鍊袋、四邊封袋、三邊封袋、紙袋、複合袋等 Stand-up pouches, handbags, zipper bags, 4-side sealing bags, 3-side sealing bags, paper bags, compound bags, etc.
充填範圍 Filling range	10-500g
包裝速度 Packing speed	35-55包/分 bags/min (由產品特性及充填重量決定 depending on the product features and filling weight)
主機重量 Weight	2400kg
主機功率 Host power	4KW(不含真空泵not including vacuum)
驅動電源 Drive power	三相五線 380V 50HZ 3-phase 5-wire system 380V 50HZ
外形尺寸 Dimensions	2700X2200X1600mm(不含提升機without elevator)
耗氣量 Air consumption	≥0.4m <sup>3</sup> /min(壓縮空氣由用戶自行提供 compressed air provided by the user)
冷卻用水 Cooling Water	冷卻水Cooling water: 15°C-20°C、3升/分鐘3liters/min (建議配冷卻機recommended with cooler)

▲機器可能在未事先通知的情況下對技術進行改進，照片僅供參考，以實物為準。  
Words and photographs on this catalogues are to help understanding of the machine model only and subject to technical modification without prior notice. The final specification is as per our quotation offered to yourself exclusively.





# 醬醃菜自動計量真空包裝機

## MB8ZK10-130/150/200

Pickles Automatic Measuring Vacuum Packaging Machine



### 主要性能和特点

- 1、自動真空包裝機由兩種分離的旋轉式機體組成（分別為充填系統和真空系統）；
- 2、操作方便：採用PLC觸控式螢幕控制，人機界面作業系統，操作直觀方便；
- 3、調節方便：真正實現全自動化。只需從人機界面輸入所需參數，包裝機各部位即可調節到所需指令的部分；
- 4、自動化程度高：達到全自動真空要求，在稱重、包裝過程中實現無人化。出現故障自動報警；
- 5、完善的預防系統，可智慧檢測是否開袋及開袋是否完整，在不合適加料的情況下不加料不熱封。不浪費袋子及物料，節約成本；
- 6、設備符合食品加工機械的衛生標準，設備與物料接觸部分採用304不鏽鋼或其他符合食品衛生要求的材料加工，保證食品的衛生和安全，符合GMP標準；
- 7、使用預製包裝袋，封口品質高，提高成品檔次；
- 8、適用包裝範圍適用範圍：可用于榨菜、酸菜、梅菜筍絲、蘿蔔乾、海帶、杏鮑菇、魔芋等各類醬醃菜及肉製品包裝。



## Main performance and features

1. Automatic vacuum packaging machine separated by two rotary body composition (filling and vacuum systems).
2. Easy to operate: PLC touch screen control, man-machine interface operating system, intuitive and easy to operate.
3. Easy to adjust: real fully automated. Just part of the required input parameters from the man-machine interface, all parts of the packaging machine can be adjusted to the desired command.
4. The high degree of automation: up automatic vacuum requirements, weighing and packaging process to achieve unmanned. If there is fault alarm occurs.
5. Perfect prevention systems, may only detect whether it opens the bag, and opening bags is complete, in the case of inappropriate feeding does not feed heat sealing. No wasting bags and material, it costs savings.
6. The device complies with hygienic standards of food processing machinery, equipment and material contact parts made of 304 stainless steel or other materials with food hygienic requirements processing, and ensure food hygiene and safety, in line with GMP standards.
7. The use of prefabricated bags, high sealing quality, improve product quality.
8. Suitable packaging materials range: mustard, sauerkraut, pickled shredded bamboo shoots, dried turnip, kelp, pleurous eryngii, konjak and all kinds of pickles.

## 工作流程 Work process

1. 上袋、2. 開袋、3. 下料、4. 加液、5. 預留、6. 預留、7. 渡袋、8. 預留→（真空）、
1. 接袋、2. 合蓋、3. 一次真空、4. 二次真空、5. 三次真空、6. 四次真空、7. 封口、8. 封口冷卻、9. 放氣、10. 開蓋出袋。
1. feed bags, 2. open bags, 3. fall material, 4. add liquid, 5. reserve, 6.reserve, 7. pass bags, 8. reserve (vacuum),
1. receive bags, 2. close the lid, 3. vacuum one time, 4. vacuum twice, 5. vacuum three times, 6. vacuum four times, 7. seal, 8. seal&cool, 9. deflate, 10. open the lid and output.

## 主要技術參數 Main technical parameter

型 號 Model	MB8ZK10-130	MB8ZK10-150	MB8ZK10-200
包裝袋規格 Bags Specifications	W : 70-130mm L : 80-210mm	W : 70-150mm L : 80-230mm	W : 80-200mm L : 80-300mm
袋子類型 Bag Type	自立袋、手提袋、拉鍊袋、四邊封袋、三邊封袋、紙袋、複合袋等 Stand-up pouches, handbags, zipper bags, 4-side sealing bags, 3-side sealing bags, paper bags, compound bags, etc.		
充填範圍 Filling range	10-300g		
包裝精度 Packaging accuracy	偏差Error ≤ ±1g (計量精度與物料相關The measuring accuracy is depending on the material)		
包裝速度 Packing speed	35-55包/分bags/min	35-55包/分bags/min	35-45包/分bags/min
主機重量 Weight	2400kg		
主機功率 Host power	4KW(不含真空泵not including vacuum)		
驅動電源 Drive power	三廂五線 380V 50HZ 3-phase 5-wire system 380V 50HZ		
外形尺寸 Dimensions	3150X3000X2400mm(不含提升機，提升機高度:3400mm without elevator, elevator height:3400mm)		
耗 氣 量 Air consumption	≥0.4m <sup>3</sup> /min(壓縮空氣由用戶自行提供 compressed air provided by the user)		
冷卻用水 Cooling Water	冷卻水Cooling water: 15°C-20°C、3升/分鐘 3liters/min (建議配冷卻機recommended with cooler)		

▲ 機器可能在未事先通知的情況下對技術進行改進，照片僅供參考，以實物為準。  
Words and photographs on this catalogues are to help understanding of the machine model only and subject to technical modification without prior notice. The final specification is as per our quotation offered to yourself exclusively.



# 刮板式自動計量真空包裝機

## MB8ZK10-130/150

### Scraper Type Automatic Measuring Vacuum Packaging Machine

#### 工作流程

#### Work process

1. 上袋、2. 開袋、3. 下料、4. 加液、5. 預留、6. 預留、7. 渡袋、8. 預留→（真空）、

1. 接袋、2. 合蓋、3. 一次真空、4. 二次真空、5. 三次真空、6. 四次真空、7. 封口、8. 封口冷卻、9. 放氣、10. 開蓋出袋。

1. feed bags, 2. open bags, 3. fall material, 4. add liquid, 5. reserve, 6.reserve, 7. pass bags, 8. reserve (vacuum),

1. receive bags, 2. close the lid, 3. vacuum one time, 4. vacuum twice, 5. vacuum three times, 6. vacuum four times, 7. seal, 8. seal&cool, 9. deflate, 10. open the lid and output.



## 主要性能和特點

### Main performance and features

- 1、自動真空包裝機由兩種分離的旋轉式機體組成（分別為充填系統和真空系統）；
- 2、操作方便：採用PLC觸控式螢幕控制，人機界面作業系統，操作直觀方便；
- 3、調節方便：真正實現全自動化。只需從人機界面輸入所需參數，包裝機各部位即可調節到所需指令的部分；
- 4、自動化程度高：達到全自動真空要求，在稱重、包裝過程中實現無人化。出現故障自動報警；
- 5、完善的預防系統，可智慧檢測是否開袋及開袋是否完整，在不合適加料的情況下不加料不熱封。不浪費袋子及物料，節約成本；
- 6、設備符合食品加工機械的衛生標準，設備與物料接觸部分採用304不銹鋼或其他符合食品衛生要求的材料加工，保證食品的衛生和安全，符合GMP標準；
- 7、使用預製包裝袋，封口品質高，提高成品檔次；
- 8、適用包裝物料範圍：可用於對酸豆角、雞塊、烤鴨肉、肉丁、筍絲等物料進行包裝。

1. Automatic vacuum packaging machine separated by two rotary body composition (filling and vacuum systems).
2. Easy to operate: PLC touch screen control, man-machine interface operating system, intuitive and easy to operate.
3. Easy to adjust: real fully automated. Just part of the required input parameters from the man-machine interface, all parts of the packaging machine can be adjusted to the desired command.
4. The high degree of automation: up automatic vacuum requirements, weighing and packaging process to achieve unmanned. If there is fault alarm occurs.
5. Perfect prevention systems, may only detect whether it opens the bag, and opening bags is complete, in the case of inappropriate feeding does not feed heat sealing. No wasting bags and material, it costs savings.
6. The device complies with hygienic standards of food processing machinery, equipment and material contact parts made of 304 stainless steel or other materials with food hygienic requirements processing, and ensure food hygiene and safety, in line with GMP standards.
7. The use of prefabricated bags, high sealing quality, improve product quality.
8. Suitable packaging materials range: Acid beans, chicken nuggets, roast duck meat, diced meat, bamboo shoot and so on.

## 主要技術參數 Main technical parameter

型 號 Model	MB8ZK10-130	MB8ZK10-150
包裝袋規格 Bags Specifications	W:70-130mm L:80-210mm	W:70-150mm L:80-230mm
袋子類型 Bag Type	自立袋、手提袋、拉鍊袋、四邊封袋、三邊封袋、紙袋、複合袋等 Stand-up pouches, handbags, zipper bags, 4-side sealing bags, 3-side sealing bags, paper bags, compound bags, etc.	
充填範圍 Filling range	20-1000g	
包裝速度 Packing speed	35-55包/分bags/min	35-55包/分bags/min
主機重量 Weight	2400kg	
主機功率 Host power	4KW(不含真空泵not including vacuum)	
驅動電源 Drive power	三相五線 380V 50HZ 3-phase 5-wire system 380V 50HZ	
外形尺寸 Dimensions	2700X3200X2200mm(不含提升機，提升機高度:3000mm without elevator, elevator height:3000mm)	
耗 氣 量 Air consumption	≥0.4m³/min(壓縮空氣由用戶自行提供 compressed air provided by the user)	
冷卻用水 Cooling Water	冷卻水Cooling water: 15°C-20°C、3升/分鐘 3liters/min (建議配冷卻機recommended with cooler)	

▲ 機器可能在未事先通知的情況下對技術進行改進，照片僅供參考，以實物為準。  
Words and photographs on this catalogues are to help understanding of the machine model only and subject to technical modification without prior notice. The final specification is as per our quotation offered to yourself exclusively.



# 碗式手工計量真空包裝機

## MB8ZK10-130/150/200

### Manual Measuring Vacuum Packaging Machine



#### 主要性能和特點

#### Main performance and features

- 1、自動真空包裝機由兩種分離的旋轉式機體組成（分別為充填系統和真空系統）；
- 2、操作方便：採用PLC觸控式螢幕控制，人機界面操作系統，操作直觀方便；
- 3、調節方便：真正實現全自動化。只需從人機界面輸入所需參數，包裝機各部位即可調節到所需指令的部分；
- 4、完善的預防系統，可智慧檢測是否開袋及開袋是否完整，在不合適加料的情況下不加料不熱封。不浪費袋子及物料，節約成本；
- 5、設備符合食品加工機械的衛生標準，設備與物料接觸部分採用304不鏽鋼或其他符合食品衛生要求的材料加工，保證食品的衛生和安全，符合GMP標準；
- 6、使用預製包裝袋，封口品質高，提高成品檔次；
- 7、適用包裝物料範圍：可用於手工投料鹵製品，如鴨脖、鴨翅、鴨腿、魚幹、魷魚仔等。

1. Automatic rotary vacuum packaging machine separated by two rotary body composition (filling and vacuum systems).
2. Easy to operate: PLC touch screen control, man-machine interface operating system, intuitive and easy to operate.
3. Easy to adjust: real fully automated. Just part of the required input parameters from the man-machine interface, all parts of the packaging machine can be adjusted to the desired command.
4. Perfect prevention systems, may only detect whether it opens the bag, and opening bags is complete, in the case of inappropriate feeding does not feed heat sealing. No wasting bags and material, it costs savings.
5. The device complies with hygienic standards of food processing machinery, equipment and material contact parts made of 304 stainless steel or other materials with food hygienic requirements processing, and ensure food hygiene and safety, in line with GMP standards.
6. The use of prefabricated bags, high sealing quality, improve product quality.
7. Suitable packaging materials range: a variety of mixture which can not measure automatically, such as snack, fresh bamboo, bamboo shoot and so on.



## 主要技術參數 Main technical parameter

型 號 Model	MB8ZK10-130	MB8ZK10-150	MB8ZK10-200
包裝袋規格 Bags Specifications	W:70-130mm L:80-210mm	W:70-150mm L:80-230mm	W:80-200mm L:80-300mm
袋子類型 Bag Type	自立袋、手提袋、拉鍊袋、四邊封袋、三邊封袋、紙袋、複合袋等 Stand-up pouches, handbags, zipper bags, 4-side sealing bags, 3-side sealing bags, paper bags, compound bags, etc.		
充填範圍 Filling range	20-1000g		
包裝速度 Packing speed	35-55包/分bags/min	35-55包/分bags/min	35-45包/分bags/min
主機重量 Weight	2400kg		
主機功率 Host power	4KW(不含真空泵not including vacuum)		
驅動電源 Drive power	三相五線 380V 50HZ 3-phase 5-wire system 380V 50HZ		
外形尺寸 Dimensions	6200X2200X2000mm(不含提升機without elevator)		
耗 氣 量 Air consumption	≥0.4m³/min(壓縮空氣由用戶自行提供 compressed air provided by the user)		
冷卻用水 Cooling Water	冷卻水Cooling water: 15°C-20°C、3升/分鐘3liters/min (建議配冷卻機recommended with cooler)		

▲ 機器可能在未事先通知的情況下對技術進行改進，照片僅供參考，以實物為準。  
Words and photographs on this catalogues are to help understanding of the machine model only and subject to technical modification without prior notice. The final specification is as per our quotation offered to yourself exclusively.

## 工作流程 Work process

1. 上袋、2. 開袋、3. 下料、4. 加液、5. 預留、6. 預留、7. 渡袋、8. 預留→（真空）、
  1. 接袋、2. 合蓋、3. 一次真空、4. 二次真空、5. 三次真空、6. 四次真空、7. 封口、8. 封口冷卻、
  9. 放氣、10. 開蓋出袋。
1. feed bags, 2. open bags, 3. fall material, 4. add liquid, 5. reserve, 6. reserve, 7. pass bags, 8. reserve (vacuum),  
1. receive bags, 2. close the lid, 3. vacuum one time, 4. vacuum twice, 5. vacuum three times, 6. vacuum four times, 7. seal, 8. seal&cool, 9. deflate, 10. open the lid and output.





# 固體顆粒自動包裝機

## MB6/8-200G

### Solid Granule Automatic Packing Machine

#### 概述

#### Application:

該設備由預製袋全自動旋轉包裝機與電子組合秤配套而成，以計量精確、包裝速度快、運行穩定及應用範圍廣等優點贏得了廣大客戶的好評，從而使食品行業包裝車間進入了機械化。

The equipment bag fully automatic rotary packing machine and electronic weigher and supporting, with accurate measurement, fast packaging speed, stable operation and wide application range and other advantages to win the praise of customers, so that the food industry packaging workshop into a mechanized.



## 工作流程 Work process

六工位：1. 上袋、2. 打碼、3. 開袋、4. 下料&振動、5. 熱封、6. 整型輸出。  
八工位：1. 上袋、2. 打碼、3. 開袋、4. 下料&振動(1次)、5. 下料(2次)、  
6. 熱封(1次)、7. 熱封(2次)、8. 整型輸出。

Six-station: 1. giving the bag, 2. coding, 3. opening the bag, 4 falling & vibration,  
5. heat Sealing, 6. forming output.

Eight-station: 1. giving the bag, 2. coding, 3. opening the bag, 4. falling &  
vibration(1 time), 4. cutting(2 time), 6. Sealing(1 time),  
7. Sealing(2 time), 8. forming output.

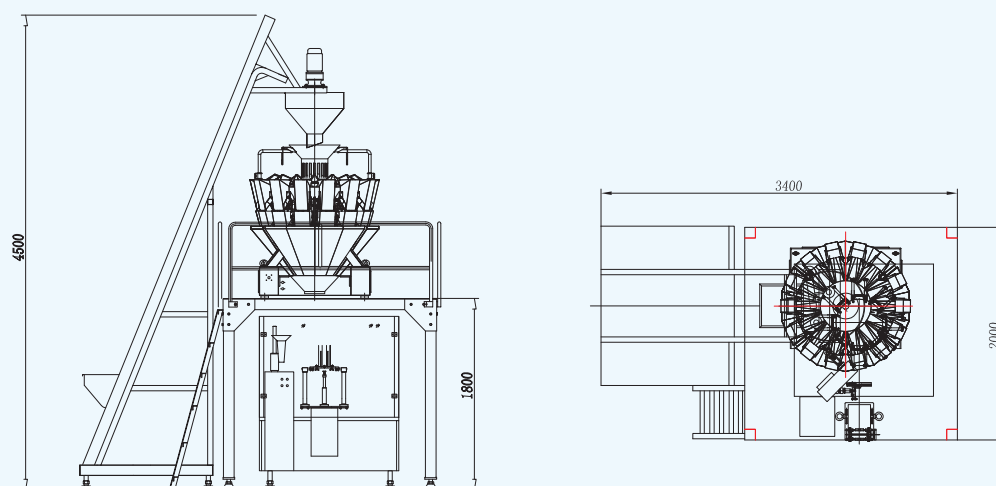


## 主要技術參數 Main technical parameter

包裝速度 capacity	45-60包/分鐘 bag/min
包裝袋袋寬 Big size	W:70-200mm L:100-300mm
包裝物料 Packing material	糖果、麥片、蜜餞、巧克力、餅、糕點、膨化食品及部分醬醃菜 candy, cornmeal, chocolate, cake, snack, Puffed food and some pickles
袋子類型 Bag type	自立袋、手提袋、拉鍊袋、四邊封袋、三邊封袋、紙袋、M型袋等複合袋 Stand-up bags, handbags, zipper bags, 4-side sealing bags, 3-side sealing bags, paper bags, M type bags, compound bags, etc.
耗氣量 Air consumption	≥0.6m³/min
包裝精度 Packaging accuracy	偏差Error≤±1g (計量精度與物料相關The measuring accuracy is depending on the material)
充填範圍 Filling range	20g-500g
主機電源 Host power	三相380V 3-phase 380V
功率 Power	4KW
外形尺寸 Machine dimension	2450X1200X2500mm (含輸送機提升機，提升機高度4500mm) (including conveyor and elevator, elevator height: 4500mm)
整機重量 Machine weight	1500kg

▲ 機器可能在未事先通知的情況下對技術進行改進，照片僅供參考，以實物為準。  
Words and photographs on this catalogues are to help understanding of the machine model only and subject to  
technical modification without prior notice. The final specification is as per our quotation offered to yourself exclusively.

## 尺寸示意圖 Size Diagram





# 自動瓶子灌裝機

## MB8-P150

### Fully Automatic Bottle Filling Machine



#### 適用範圍

#### Applicable types

可用於對玻璃瓶、塑膠瓶進行直接自動灌裝；灌裝物料：炒貨、乾果、醬醃菜、半流體、液體、粉劑等。

It can be used for glass bottles, plastic bottles for direct automatic filling; filling materials: roasted seeds and nuts, dried fruit, pickles, semi-fluid, liquid, powder and so on.



## 概述

### Application:

該設備由我公司自主研發而成的一款瓶子灌裝機，克服了傳統手工灌裝慢、計量誤差大、員工工作環境差等難題。本機可根據不同的灌裝物料採用不同的計量方法，常用的計量方式有醬醃菜計量機、液體計量機、粉劑計量機、多頭組合秤等配套使用，以滿足設備灌裝速度快、計量精準、運行穩定等要求；設備生產過程中避免了員工與物料的再次直接接觸，節省了大量勞動力、優化工作環境、消除污染環節、提高了生產效率、大幅度降低了成本，從而在市場上贏得了客戶的一致好評。

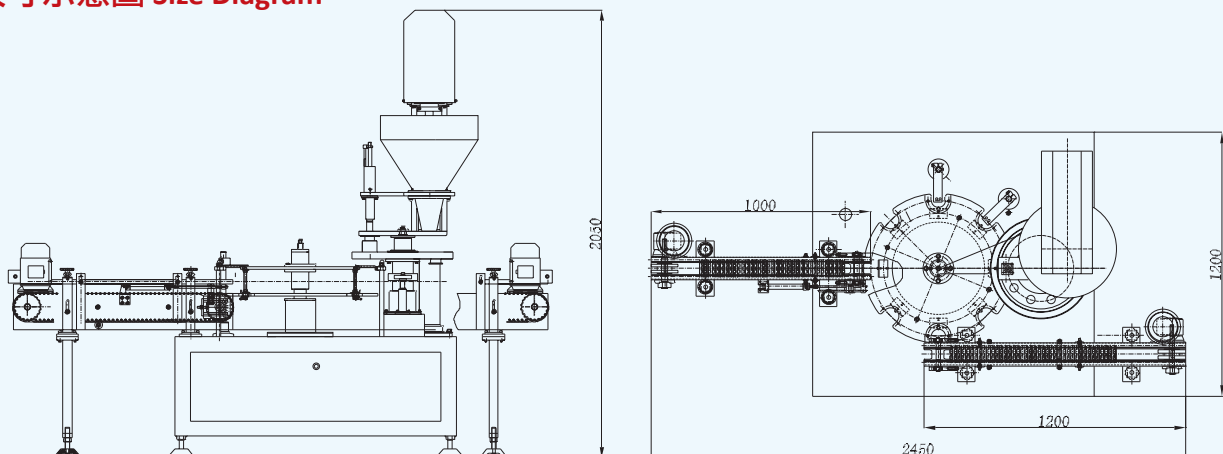
The equipment consists of the company's independent research and development of a bottle filling machine filling slow to overcome the traditional manual, measurement error, and poor staff work environment problems. The machine can be adopted according to the different filling materials different measurement methods, commonly used measurement methods are pickles weighing machine, weighing machine liquid, powder weighing machine, multi-head weigher supporting the use of equipment to meet the fast filling, metering precise and stable operation requirements; equipment production process to avoid direct contact with the staff and the material again, saving a lot of labor, optimize the working environment, eliminate pollution areas, improve production efficiency and significantly reduce costs, to win in the market the praise of customers.

### 主要技術參數 Main technical parameter

包裝速度 Speed	35-55瓶/分鐘 bottles/min
充填範圍 Filing range	10-300g
包裝精度 Packaging accuracy	偏差Error $\leq \pm 1g$ (計量精度與物料相關The measuring accuracy is depending on the material)
耗氣量 Air displacement	$\geq 0.4m^3/min$
主機電源 Host power	三相380V
控制電源 Control source	DC24V
總功率 Total Power	4.0Kw
外形尺寸 Machine dimension	1900X1770X2500mm (含輸送機提升機) (including conveyor and elevator)
整機重量 Machine weight	1000kg

▲機器可能在未事先通知的情況下對技術進行改進，照片僅供參考，以實物為準。  
 Words and photographs on this catalogues are to help understanding of the machine model only and subject to technical modification without prior notice. The final specification is as per our quotation offered to yourself exclusively.

### 尺寸示意圖 Size Diagram





# 自動充填包裝機

MB8-200B

Automatic Filling Packaging Machine



## 概述

該設備由預製袋全自動旋轉包裝機與多種計量方式相結合；如組合稱、液體（醬體）定量器、醬菜計量機、粉劑螺桿稱相配套。該設備計量精準、包裝速度快、運行穩定及應用範圍廣等優點贏得了廣大客戶的好評，從而使食品行業包裝車間進入了機械化。

## Application:

This equipment matches the pre-made bag fully automatic rotating packaging machine with the variety of measurement methods, e.g.combination weigher, liquid(paste)controller, pickle measurement machine, powder screw weigher. Accurate measurement, fast packaging speed, stable running and wide applications range. These advantages help us to win the high praise of customers, so that the food packing industry workshop is into the machine.

## 適用範圍

- 1、糖果、麥片、蜜餞、巧克力、餅、糕點、膨化食品等。
- 2、果汁、番茄醬、花生醬、辣椒醬、洗手液、洗滌劑等。
- 3、奶粉、咖啡、調味品、添加劑等。
- 4、炒貨乾果、休閒食品等。

## Applicable types

1. Candy, cornmeal, preserved fruit, chocolate, pan cake, cake, puffed food, etc.
2. Juice, tomato sauce, peanut sauce, chili sauce, washing liquid and detergent, etc.
3. Milk powder, coffee, spice and additive, etc.
4. Roasted seeds and nuts, dry fruit, leisure food.

## 工作流程 Work process

1. 上袋、2. 開袋、3. 下料、4. 加液、5. 預留、6. 預留、7. 封口、8. 封口輸出。
1. put the bag, 2. open the bag, 3. fall the material, 4. add liquid, 5. reserve, 6. reserve, 7. seal, 8. output.

## 主要技術參數 Main technical parameter

包裝袋規格	Bags Specifications	W70-200mmL90-300mm
袋子類型	Bag Type	自立袋、手提袋、拉鍊袋、四邊封袋、三邊封袋、紙袋、M型袋等複合袋。 Stand-up pouches, handbags, zipper bags, 4-side sealing bags, 3-side sealing bags, paper bags, compound bags, etc.
充填範圍	Filling range	10-500g
包裝速度	Packing speed	25-60包/分bags/min (由產品特性及充填重量決定depending on the product features and filling weight)
主機重量	Weight	1000kg
主機功率	Host power	2KW
主機電源	Drive power	三相380V 50HZ 3-phase 380V 50HZ
外形尺寸	Dimensions	2350X1350X1650mm
耗氣量	Air consumption	≥0.5m³/min(壓縮空氣由用戶自行提供 compressed air provided by the user)

▲機器可能在未事先通知的情況下對技術進行改進，照片僅供參考，以實物為準。  
Words and photographs on this catalogues are to help understanding of the machine model only and subject to technical modification without prior notice. The final specification is as per our quotation offered to yourself exclusively.



# 醬醃菜自動包裝機

## MB6-200J

### Automatic Packaging Machine For Pickles

#### 概述

#### Application:

該設備是由我公司自主研發而成的一款給袋式醬醃菜包裝機，克服了傳統醬醃菜行業包裝速度慢、計量誤差大、員工工作環境差等難題。本機具有全自動上料、自動計量、自動灌裝、一體化操控、包裝速度快、計量誤差精準等優點，且設備運行穩定，清洗維修方便；設備生產過程中避免了員工與物料的再次直接接觸、節省大量勞動力、優化工作環境、消除污染環節、實現了自動化計量包裝、提高了生產效率、大幅度降低了成本，從而在市場上贏得了客戶的一致好評。

The device is made by the company's independent research and development of a packaging machine to bag pickles, pickles packaging industry to overcome the traditional slow, measurement error, and poor employee work environment problems. The machine has automatic feeding, automatic metering, automatic filling, integrated control, packaging, speed, precision measurement errors, etc., and equipment operation and stability, easy cleaning and maintenance; equipment production process to avoid the re-direct employees and materials contacts, save a lot of labor, optimize the working environment, eliminate pollution links, automated weighing and packaging, improve production efficiency and significant cost savings, resulting in the market has won the praise of customers.



## 適用範圍

### Applicable types

可用于榨菜、酸菜、梅菜筍絲、金針菇、蘿蔔乾、姜片、梅菜花生、海帶、魔芋、杏鮑菇等各類醬醃菜及肉製品包裝。

It can be used for mustard, sauerkraut, pickled shredded bamboo shoots, mushroom, Robbie dry, ginger, pickled peanuts, kelp, konjac, mushroom and other types of pickles and meat packaging.

## 工作流程

### Work process

1. 上袋、2. 開袋、3. 下料、4. 加液、5. 熱封、6. 整形輸出。

1. put the bag, 2. open the bag, 3. fall the material, 4 add liquid, 5. seal, 6. output.

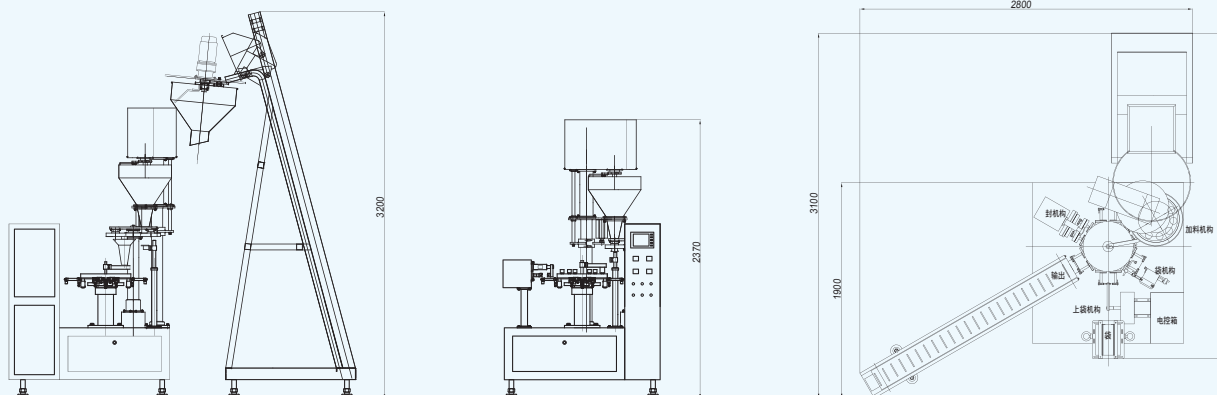


## 主要技術參數 Main technical parameter

包裝速度 Capacity	40-60包/分鐘 bags/min
包裝袋範圍 Pouch size	W:70-200mm L:100-300mm
袋子類型 Pouch shape	自立袋、手提袋、拉鍊袋、四邊封袋、三邊封袋、紙袋、M型袋等複合袋 Stand-up pouches, handbags, zipper bags, 4-side sealing bags, 3-side sealing bags, paper bags, compound bags, etc.
包裝精度 Packaging accuracy	偏差Error $\leq \pm 1g$ (計量精度與物料相關The measuring accuracy is depending on the material)
充填範圍 Filing range	10-300g
主機電源 Host power	三相380V
控制電源 Control source	DC24V
總功率 Total Power	4.0Kw
耗氣量 Air displacement	$\geq 0.7m^3/min$
外形尺寸 Machine dimension	2250X1600X3700mm (含輸送機提升機) (including conveyor and elevator)
整機重量 Machine weight	1500kg

▲ 機器可能在未事先通知的情況下對技術進行改進，照片僅供參考，以實物為準。  
Words and photographs on this catalogues are to help understanding of the machine model only and subject to technical modification without prior notice. The final specification is as per our quotation offered to yourself exclusively.

## 尺寸示意圖 Size Diagram





# 粉劑自動計量包裝機

MB6/8-200F

Automatic Packing Machine For Powder



## 概述

### Application:

這套設備由預製袋全自動旋轉包裝機與螺桿秤配套而成，適用於自立袋、手提袋、拉鍊袋、四邊封袋、三邊封袋、紙袋、M型袋等複合袋等袋子的奶粉、咖啡、調味品、添加劑等粉末物料的自動包裝機。

This set of equipment is composed of prefabricated bag packing machine and automatic rotating screw said supporting and become, applicable to the self-supporting bag, hand bag, zipper bag, four sides sealing bag, three sides sealing bag, paper bag, M bag, compound bag, bag, milk powder, seasoning, Coffee additive powder automatic packaging machine.

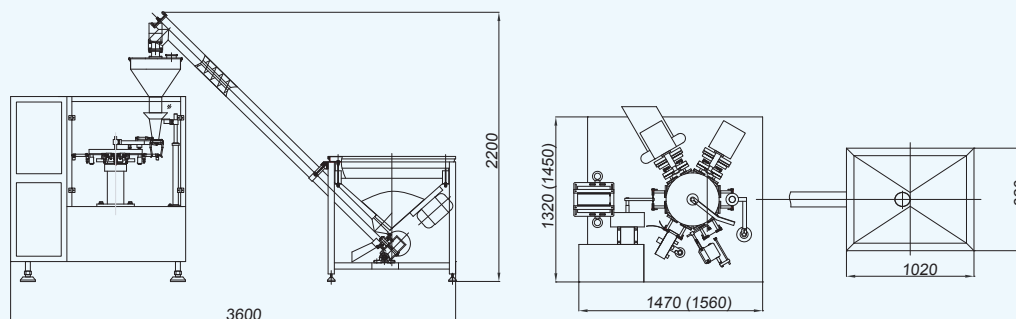
### 主要技術參數 Main technical parameter

包裝速度 Speed	30-60包/分鐘 bag/min
袋子範圍 Bag size	W:70-200mm L:100-300mm
充填範圍 Filling range	10-500g
耗氣量 Air displacement	≥0.4m³/min
包裝精度 Packaging accuracy	偏差Error≤±1g (計量精度與物料相關The measuring accuracy is depending on the material)
主機電源 Host power	三相380V 3-phase AC 380V
控制電源 Control supply	DC24V
總功率 Power	3.8Kw
外形尺寸 Overall dimension	3500X1770X2840mm (含輸送機提升機)(including conveyor and elevator)
整機重量 Machine weight	1000kg

▲機器可能在未事先通知的情況下對技術進行改進，照片僅供參考，以實物為準。  
Words and photographs on this catalogues are to help understanding of the machine model only and subject to technical modification without prior notice. The final specification is as per our quotation offered to youself exclusively.



### 尺寸示意圖 Size Diagram

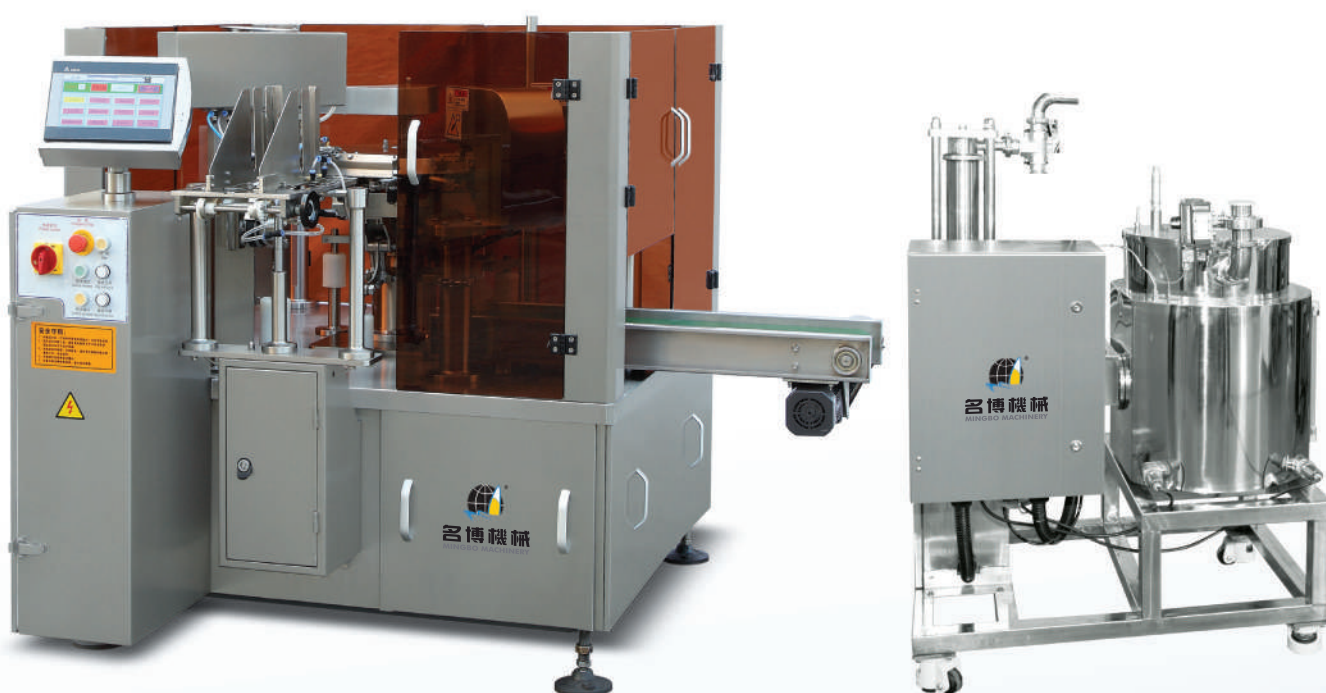




# 液體/醬體 自動計量包裝機

## MB8-200Y

### Automatic Weighing Packaging Machine For Liquid(paste)



#### 主要技術參數 Main technical parameter

包裝速度 Speed	25-55包/分鐘 bag/min
袋子範圍 Bag size	W:70-200mm L:100-300mm
充填範圍 Filling range	20-300g
耗氣量 Air displacement	≥0.4m³/min
包裝精度 Packaging accuracy	偏差Error≤±1g (計量精度與物料相關The measuring accuracy is depending on the material)
主機電源 Host power	三相380V 3-phase AC380C
控制電源 Control supply	DC24V
總功率 Power	3.5Kw
外形尺寸 Overall dimension	1700X1600X1600mm (含輸送機提升機)(including conveyor and elevator)
整機重量 Machine weight	1000kg

▲機器可能在未事先通知的情況下對技術進行改進，照片僅供參考，以實物為準。  
Words and photographs on this catalogues are to help understanding of the machine model only and subject to technical modification without prior notice.The final specification is as per our quotation offered to you/yourself exclusively.

# 真空機

## ZK10-130/150 Vacuum Machine



(可選配各種給袋式包裝機)  
(Can match various bag packaging machine)

### 主要技術參數 Main technical parameter

型 號 Model	ZK10-130	ZK10-150
包裝袋規格 Bags Specifications	W:70-130mm L:80-210mm	W:70-150mm L:80-230mm
包裝速度 Packing speed	35-55包/分bags/min	35-55包/分bags/min
主機重量 Weight	1000kg	
主機功率 Host power	1.5KW(不含真空泵not including vacuum)	
驅動電源 Drive power	三相五線 380V 50HZ 3-phase 5-wire system 380V 50HZ	
外形尺寸 Dimensions	1700X1200X1400mm(不含提升機without elevator)	
耗 氣 量 Air consumption	≥0.2m <sup>3</sup> /min(壓縮空氣由用戶自行提供 compressed air provided by the user)	
冷卻用水 Cooling Water	冷卻水Cooling water: 15°C-20°C、3升/分鐘 3liters/min (建議配冷卻機recommended with cooler)	

▲ 機器可能在未事先通知的情況下對技術進行改進，照片僅供參考，以實物為準。  
Words and photographs on this catalogues are to help understanding of the machine model only and subject to technical modification without prior notice. The final specification is as per our quotation offered to yourself exclusively.